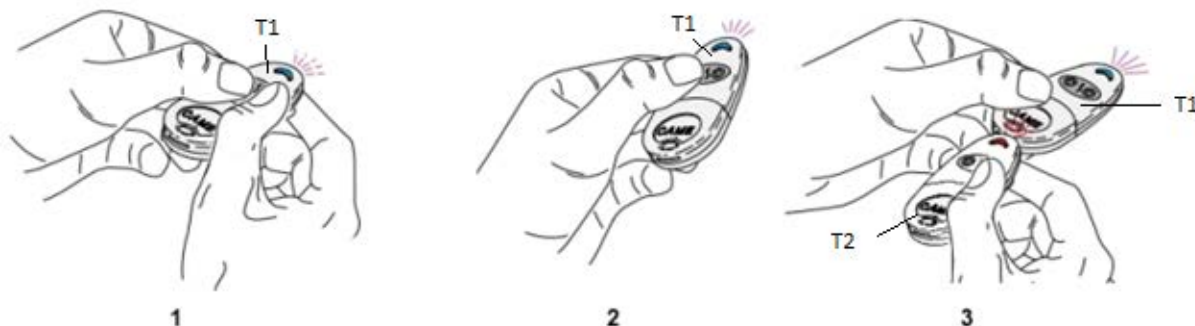


# Programming Manual

## CAME TOP432NA - TOP432EV - TOP434NA - TOP434EV - TOP862NA - TAM432SA



### Programming of your new remote control :

**During the coding process, if you press one of the buttons of the already-programmed remote control first, you run the risk of erasing the codes of all of the remote controls that have already been programmed**

1. Press both top buttons on your new remote control at the same time (1). Keep them pressed down. The LED light on your new remote control blinks slowly and then faster. Let the buttons go.
2. Press the button of your new remote control (T1). Let it go. The LED light on your new remote control remains lit constantly (2).
3. Place an already-programmed remote control (T2) next to the new remote control (T1) so they touch as shown in the diagram above (3). While the light on your new remote control (T1) is lit constantly (5 seconds only), press the same button on the old remote control (T2) that you pressed on the new remote control until the LED light on the new remote control (T1) blinks three times.
4. Your new remote control is programmed. Repeat the procedure for each button you wish to program.

### Remarks :

- This coding operation is also available if your already-programmed remote control is compatible with the model TOP 432 SA, such as the models TOP432S, TOP432NA, TOP432M
- Your already-programmed remote control must be able to work to transmit its code to the new remote control, if not, use the following instructions :
  1. Open the casing of your receiver. It is located next to your motor.
  2. On the receiver circuit board, press the button CH1.
  3. While keeping the button CH1 pressed down, press the first button on your new remote control. Let the buttons go.
  4. On the receiver circuit board, press the button CH2.
  5. While keeping the button CH2 pressed down, press the second button on your new remote control. Let the buttons go.
  6. Your new remote control is programmed.